

## Operating Manual

WAGNER

WAGNER

WAGNER

# Tribo Automatic Powder Spray Gun

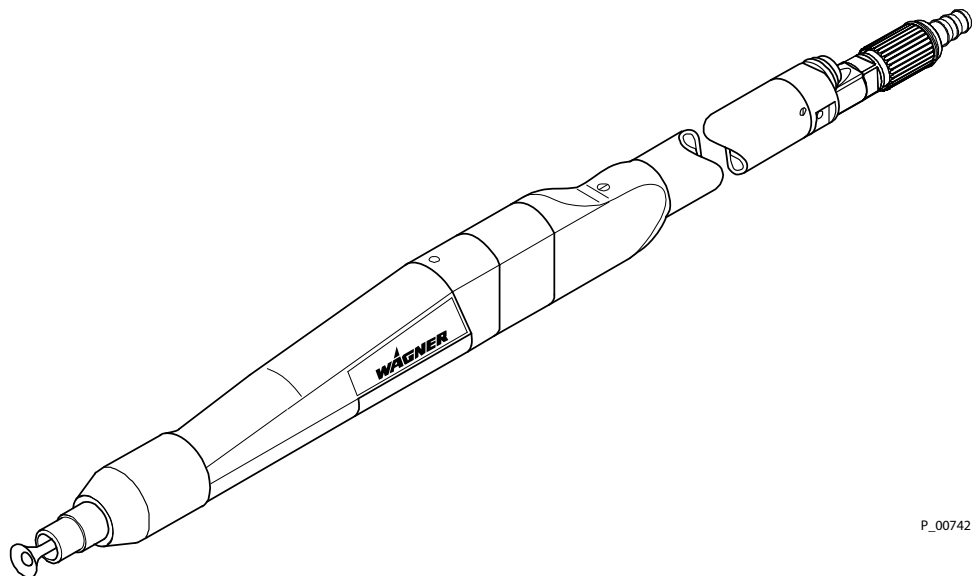
**STOP DANGER**



**High Voltage!  
Turn power off  
before servicing!**

**CAUTION**

Read rules for safe  
operation and  
instructions  
carefully!



P\_00742

CE  
0351962

## PEA-T3XL



WAGNER

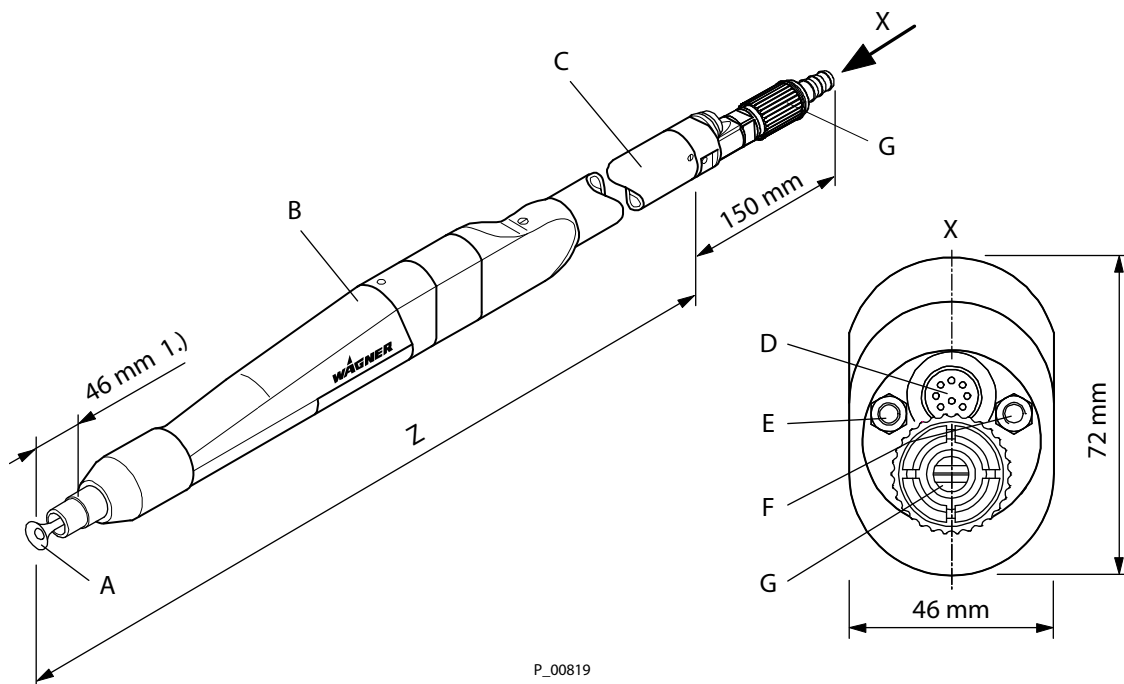
WAGNER

WAGNER

WAGNER

WAGNER

**Tribo automatic spray gun PEA-T3XL**



- |   |                       |   |  |
|---|-----------------------|---|--|
| A | Deflector cone        | E | Tribo air connection                           |
| B | Spray gun body        | F | Atomizing air connection                       |
| C | Extension             | G | Powder hose connection                         |
| D | Electrical connection | Z | maximal assembly dimension on the reciprocator |

1.) Length for installation dimension **Z** calculation when utilizing finger nozzles

The finger nozzles are described in chapter [2.1](#).

The Tribo automatic spray gun PEA-T3XL is available in four lengths:

- |                 |             |                            |
|-----------------|-------------|----------------------------|
| • PEA-T3XL 1.8  | Z = 1875 mm | Article No. <b>0351032</b> |
| • PEA-T3XL 1.4  | Z = 1475 mm | Article No. <b>0351029</b> |
| • PEA-T3XL 1.1  | Z = 1175 mm | Article No. <b>0351030</b> |
| • PEA-T3XL 0.85 | Z = 925 mm  | Article No. <b>0351031</b> |

The Tribo spray gun **PEA-T3XL** is used for industrial powder coating in **automatic plants** and can be operated with individual **control units** or with **control cabinet modules**, which have a Tribo current display.

The **PEA-T3XL** is used for processing all coating powders suitable for friction charging.



**Caution**

The operator **must** ensure that the spray gun **PEA-T3XL** is only connected to **Wagner** devices!

High room temperatures and, in particular, laying hoses in areas exposed to sunlight in factory buildings **must** be avoided!

<b>Table of contents</b>		<b>Page</b>
<b>1.</b>	<b>Safety regulations .....</b>	<b>5</b>
1.1	Safety hints.....	5
1.2	EC Declaration of conformity.....	8
<b>2.</b>	<b>Preparing the spray gun .....</b>	<b>9</b>
2.1	Selection of the suitable nozzle system .....	9
2.2	Handling of the hose coupling.....	10
2.3	Connecting the spray gun .....	11
2.4	Grounding.....	12
<b>3.</b>	<b>Working with the spray guns .....</b>	<b>13</b>
3.1	Optimizing the spray pattern .....	13
3.2	Switching off the spray gun .....	14
3.3	Performing a color change .....	15
<b>4.</b>	<b>Maintenance and cleaning.....</b>	<b>16</b>
4.1	Replacing the spray gun.....	16
4.2	Cleaning the spray gun and replacing the wearing parts .....	18
4.2.1	Replacing the charging body.....	18
4.2.2	Replacing the powder tube.....	19
4.3	Disposal.....	19
<b>5.</b>	<b>Rectification of malfunctions .....</b>	<b>20</b>
<b>6.</b>	<b>Technical data .....</b>	<b>21</b>
<b>7.</b>	<b>Warranty.....</b>	<b>22</b>
<b>8.</b>	<b>Scope of delivery and spare parts lists.....</b>	<b>23</b>
8.1	How to order spare parts.....	23
8.2	Scope of delivery and spare parts spray gun PEA-T3XL .....	24
8.3	Spare parts charging body .....	25
<b>9.</b>	<b>Accessories .....</b>	<b>26</b>
9.1	Electric cables and hoses.....	26
9.2	Spray gun mounting and fastening.....	26
9.3	Nozzle systems .....	28
9.3.1	Fan nozzle and deflector cone .....	28
9.3.2	Wide fan spray nozzle .....	28
9.3.3	Angle nozzle 90° .....	28
9.3.4	Angle adapter WA 30 T3.....	29
9.3.5	Finger nozzles.....	30
9.4	Hose take-up for axis of rotation .....	33

00\_...doc

This manual contains information and hints for the service, repair and maintenance of the equipment. The user must obey all the rules of operation found in this manual; failure to do so will render the warranty invalid.

Wagner powder systems are designed to meet the most stringent safety requirements. They can be operated in compliance with generally applicable safety codes and applicable national safety regulations.

Please pay particular attention to the parts marked by the following symbols. Follow the instructions exactly, in the interests of both your own safety and the correct functioning of the unit.



### Warning

**This symbol draws attention to the fact that if the operating instructions, working instructions, prescribed working sequences etc. are not followed exactly, this can lead to injury or even fatal accidents.**



### Caution

This symbol indicates that failure to follow the operating instructions, working instructions, prescribed working sequences etc. exactly can lead to material damage.



### Hint

This symbol draws your attention to useful additional information and tips. Failure to observe these instructions can cause malfunctions.

## 1. Safety regulations

### 1.1 Safety hints

010101\_.doc



#### Warning

This equipment can be dangerous if it is not operated in accordance with this operating manual!

There might be additional regulations to be observed, put into effect by governmental, state or other official agencies or local security (fire) departments!



#### Warning

Under no circumstance may persons with a cardiac pacemaker come close to the area between the tip of the spray gun and the work piece to be coated!

The following rules must be observed in order to ensure a safe and efficient use of the equipment:

- The user has to observe particularly the safety guidelines of the VdS, the local professional and security institutions.
- Trained and qualified personnel may only operate the electrostatic coating equipment.
- The spray gun may only be operated in powder coating booths or on powder coating stands that are equipped with a ventilation system.
- The user has to make sure, that the average powder/air concentration does not exceed 50% of the LEL (maximum allowed concentration of powder in air). If a reliable LEL value is not available, the average powder/air concentration may not exceed 10 g/m<sup>3</sup>.
- Over sprayed powder must be reliably collected.
- Adhere to the instructions given by the manufacturers and to the prevalent local laws on the environment when disposing of waste coating powder.
- The main power connection for operation of the Wagner powder equipment must be electrically interlocked with the exhaust system of the powder coating booth.
- In the event of faults or defects, repair work is to be performed at the user's discretion.
- The user must conduct periodic checks of the powder spray equipment (at least every year) with regard to explosion-protection.
- Repairs may only be carried out by trained technicians and may never be carried out in an explosion hazardous area. Protective measures against explosions must still be installed.
- The work area **must** have an electrostatically conductive floor (measured in accordance with EN 1081).
- All conductive parts in the work area **must** be electrostatically grounded (work area = 1 m around every spray location or opening in the booth).
- All persons inside the work area **must** wear electrostatically conductive footwear.
- Spray guns should be operated with bare hands! If gloves are used they **must** be made of conductive material.
- **Guideline 94/9/EG:** The device is suited for the applications it was designed for, even in explosion-hazard areas.

- **Wear suitable work clothing**
- **Use breathing protection or a visor for work which produces powder and when developing solvent steams:**

Avoid health dangers by inhalation and skin contacts of solvent steams and lacquer aerosols; Cornea injuries by splashes in the eye.
- **Check the equipment for damage**

Before operating the system, check if slightly damaged parts still function correctly. Check whether the moving parts operate properly, whether they jam and whether parts are damaged.  
**Damaged parts should be repaired or replaced by a Wagner customer service.**



### Warning

**For your own safety, use only accessories and equipment listed in the operating manual. The use of individual parts other than those recommended in the operating manual may create a hazard to personal safety.**


**Use only original Wagner replacement parts!**

**Alteration or repair of Wagner original spare parts may cause fatal accidents or explosions in the coating system!**

HAZARD	PREVENTION
<p>Electrostatic arcing may cause an explosion or fire. Mixtures of powder and air can explode or ignite causing property damage and/or severe injury.</p>	<ul style="list-style-type: none"> <li>• Operator must be grounded. Grounding straps must be used when wearing rubber soled shoes.</li> <li>• Operator must remove all metallic objects from his or her person, which are not grounded.</li> <li>• The object being sprayed must be grounded.</li> <li>• All metallic objects within the spray area must be grounded (including spray booth, part hangers, fire extinguishers, etc.)</li> <li>• Grounded conductive floor must be provided in spray area.</li> <li>• Turn off the Power Pack and unplug from outlet before flushing out the gun, cleaning or replacing parts on the gun such as changing tips.</li> </ul>
<p>Explosion or fire. Mixtures of powder and air can explode or ignite causing property damage and/or severe injury.</p>	<ul style="list-style-type: none"> <li>• Exhaust and fresh air introduction must be provided to keep the air within the spray area free of accumulation of flammable atmosphere.</li> <li>• Smoking must not be allowed in spray area.</li> <li>• Fire extinguishing equipment must be present and in working order.</li> <li>• Electrostatic arcing must be prevented. (See Electrostatic arcing)</li> <li>• When cleaning the system, use only materials recommended by the coatings manufacturer. Be sure Power Pack is turned off and unplugged.</li> <li>• Avoid all ignition sources such as static electricity sparks, open flames such as pilot lights, hot objects such as cigarettes and sparks from connecting and disconnecting power cords and working light switches.</li> <li>• To prevent hazardous concentrations of flammable atmospheres, spray only in a properly ventilated spray booth.</li> <li>• Never operate spray gun unless ventilation fans are operating properly.</li> <li>• Check and follow all National, State and Local codes regarding air exhaust velocity requirements.</li> <li>• Ventilation must be maintained during the cleaning operation.</li> </ul>
<p>Toxic Substances: Some materials may be harmful if swallowed or come in contact with the skin.</p>	<ul style="list-style-type: none"> <li>• Follow the requirements of the Material Safety Data Sheet supplied by the coatings manufacturer.</li> <li>• Exhaust and fresh air introduction must be provided within the spray area to keep the air free of high powder accumulations.</li> <li>• Wear a mask or respirator. Read all instructions for the mask to insure that it will provide the necessary protection against the inhalation of powder.</li> </ul>
<p>General</p>	<ul style="list-style-type: none"> <li>• Read all instructions and safety precautions before operating.</li> <li>• Comply with all appropriate local, state and national codes governing ventilation, fire prevention, and operation of Electrostatic equipment usage.</li> <li>• The United States Government Safety Standards have been adopted under the Occupational Safety and Health Act. These standards, particularly the General Standards, Part 1910 and the Construction Standard, Part 1926, should be consulted.</li> <li>• NFPA Standard No. 33 is to be followed when setting up your spray area. Contact the National Fire Protection Association, Batterymarch Park, Quincy, Massachusetts, 02269 for more information.</li> <li>• Check with insurance company for additional requirements.</li> <li>• Use only identical replacement parts.</li> <li>• Personnel must be given training in accordance with the requirements of NFPA Standard No. 33 chapter 18.</li> <li>• It is the duty of all personnel responsible for the spray equipment operation and maintenance to read and understand all safety information furnished with this equipment.</li> </ul>

## 1.2 EC Declaration of conformity

0103\_.doc

 Wagner hereby declares that the unit described in these operating instructions has been designed and manufactured according to the provisions of EU Directives 98/37/EG, 94/9/EG, 73/23 EWG and 89/336 EWG.

The following **European standards** were applied:

EN 12100-1/-2	EN 50281-1-1/-1-2	EN 61000-6-1
EN 61000-6-2	EN 61000-6-3	EN 60204-1
EN 50053-2	EN 50050	EN 50177

The following **German standards** and/or Guidelines were applied:

BGI 764

The product includes an **EU declaration of conformity**. This can be ordered again if necessary from your WAGNER dealer by giving details of the product and serial number involved.

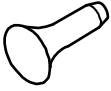
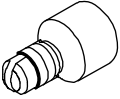
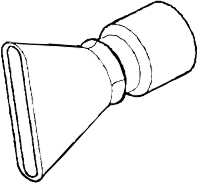
The number of the EC Declaration of Conformity is **0351962**.



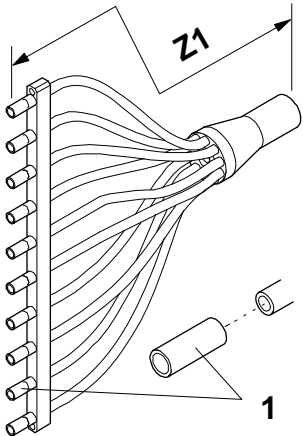

## 2. Preparing the spray gun

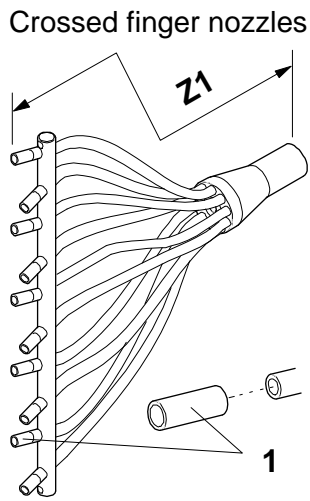
### 2.1 Selection of the suitable nozzle system

0201\_Duesenauswahl\_tribo.doc

Nozzle	Overview Application	Spray pattern
Deflector cone 	<ul style="list-style-type: none"> <li>• Wire goods</li> <li>• Grid designs</li> </ul>	Oval powder cloud: Size is dependent on the deflector cone diameter.  For powder quantities from: 50 ... 300 g/min
Fan spray nozzle 	Difficult workpieces: <ul style="list-style-type: none"> <li>• Undercuts</li> <li>• Profiles</li> </ul>	Widely spread flat powder cloud.  For powder quantities: from 50 ... 150 g/min
Wide fan spray nozzle 	Difficult workpieces: <ul style="list-style-type: none"> <li>• Undercuts</li> <li>• Profiles</li> </ul>	Widely spread flat powder cloud.  For powder quantities: from 100 ... 250 g/min

0201\_Duesenauswahl\_finger.doc

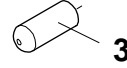
Nozzle	Overview Application	Spray pattern
Finger nozzles 	Flat surfaces <ul style="list-style-type: none"> <li>• for uniform coating thickness</li> </ul>	Directed spray with: the standard nozzle <b>1</b> or powder shower <b>2</b>   For powder quantities from: 100 ... 200 g/min



Complicated profiles

- for uniform coating thickness

Directed spray with:  
the standard nozzle **1**  
or  
powder shower **3**



For powder quantities from:  
100 ... 200 g/min

Note that the installation dimensions **Z** (as described on page 2) changes when using finger nozzles. The finger nozzle has a length of: **Z1 = 315 mm**.

The following result applies e.g. to the **PEA-T3XL 1.4**:  $Z = 1475 - 46 + Z1 = 1429 + 315 =$   
**1744 mm**

Article numbers and other information on nozzle systems are to found in chapter [9.3.5 "Finger nozzles"](#).

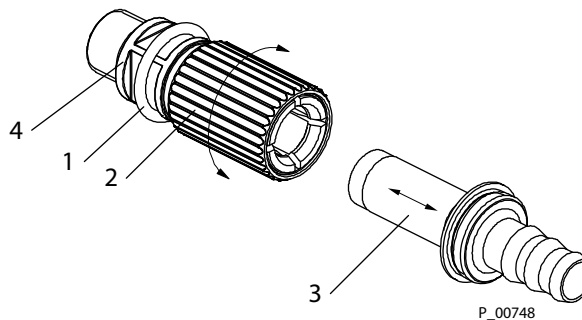
## 2.2 Handling of the hose coupling

### Loosen the hose coupling:

1. Lift the O-ring 1 out of the groove and slide it towards spray gun.
2. Turning the locking nut 2 in a clockwise direction up to the stop and pull the hose coupling 3 out of the coupling piece 4.

### Connecting the hose coupling:

3. Insert the hose coupling 3 into the coupling piece 4 and turning the locking nut 2 counterclockwise up to the stop.
4. Press the O-ring 1 into the groove again (securing function).



P\_00748



### Hint

Slide the powder hose as much as possible up to the stop onto the hose coupling!

### 2.3 Connecting the spray gun

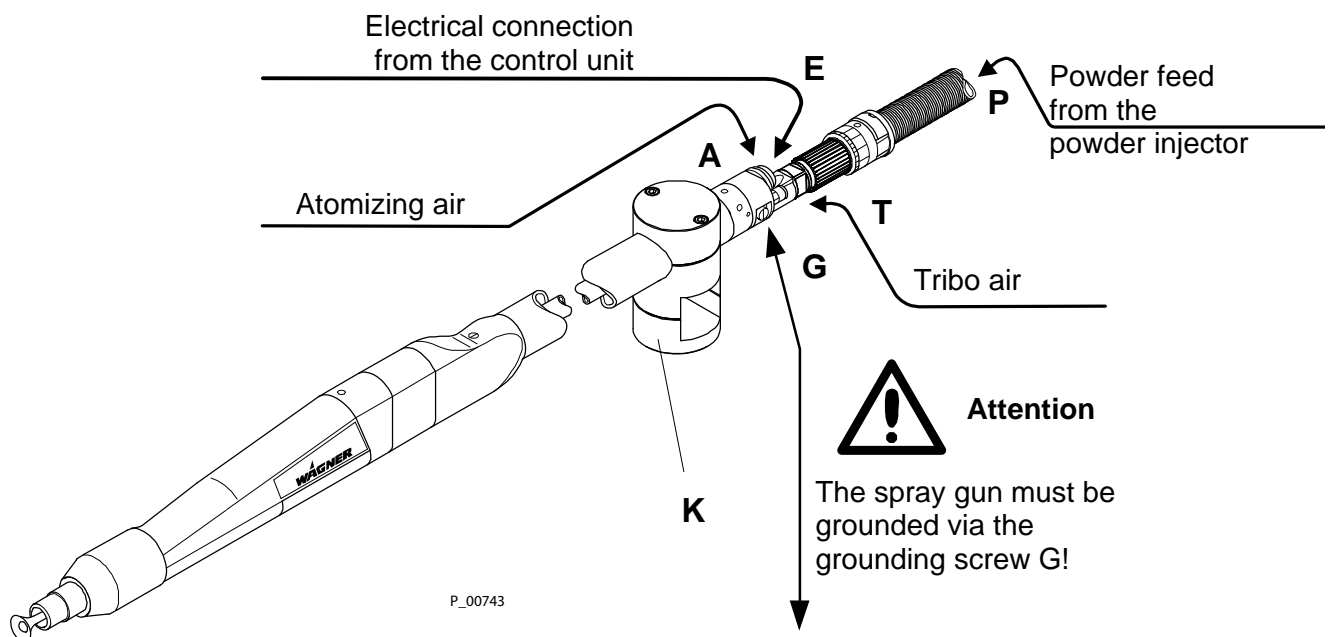
Before you commence connecting the gun, switch off the powder feed. For information on this activity refer to the related operating instructions for the control units and control modules.



#### Hint

Use the parts listed in chapter [9 "Accessories"](#) for connecting and fastening the spray gun.

The spacing between the spray guns when fitted **must be at least 300 mm**.



- Mount the spray gun via cross attaching piece **K** for example on the gun holder of the reciprocator. If an oscillator is being used, the spray gun must be fixed with a clamping element (see accessories).
- Connect the spray gun to the Tribo current measuring or display module using the electrical cable.
- Connect the hoses for the powder feed and also Tribo and atomizing air to the spray gun.



#### Hint

By using a Wagner **PI-F1** powder injector and a suitable control unit, it is possible to blow out or flush the spray gun automatically each time before it is switched off.

## 2.4 Grounding

For safety reasons, the **spray gun must** be properly grounded. This occurs through the grounding screw.

0203\_.doc

Good grounding of the **workpiece** is also necessary for optimum powder coating.

A poorly grounded workpiece causes:

- dangerous electric charging of the workpiece
- back-spray onto spray gun and user
- uneven coating
- very bad wrap around



### Warning

**Sparks between workpiece and conveyor hooks (hangers) can occur if hooks or other hanger parts are not completely cleaned!**

**These sparks can cause heavy radio frequency interference.**

### 3. Working with the spray guns

#### 3.1 Optimizing the spray pattern

0301\_Pulverwolke\_peat.doc

- Switch on the powder feed.



#### Caution

To minimize the wear on the consumables, the total feed air and dosage air must give the following values:

- for powder hose with an inner diameter of 11 mm: between **3.5 and 5 Nm<sup>3</sup>/h**
- for powder hose with an inner diameter of 12 mm: between **4.5 and 6 Nm<sup>3</sup>/h**

The total feed air; dosage air and Tribo air should not exceed **7.5 Nm<sup>3</sup>/h!**

- First open the atomizing air so that powder deposits are cleared from the deflector cone.

You can alter the size of the spray pattern during powdering by adjusting the atomizing air.

- Adjust the powder volume and the powder speed on a test piece.
- The Tribo air should only be opened far enough to attain a Tribo current indication of approx. 3  $\mu$ A.



#### Caution

Tribo air **must** be reduced or shut off if the Tribo current (charging current) exceeds 3.5  $\mu$ A!

The charging current depends on the type of powder used and should be between 2.5 and 3.5  $\mu$ A under ideal circumstances.

### 3.2 Switching off the spray gun

0302\_Ausschalten\_peat.doc

The spray gun is switched off differently depending on the type of powder injector. In the majority of cases this process is performed by a control unit of the coating system.



#### Hint

On each interruption to work, the spray gun should be blown through (purged) and powder residue removed. In this way **powder deposits** and a **surge** the next time the spray gun is switched on can be largely avoided.

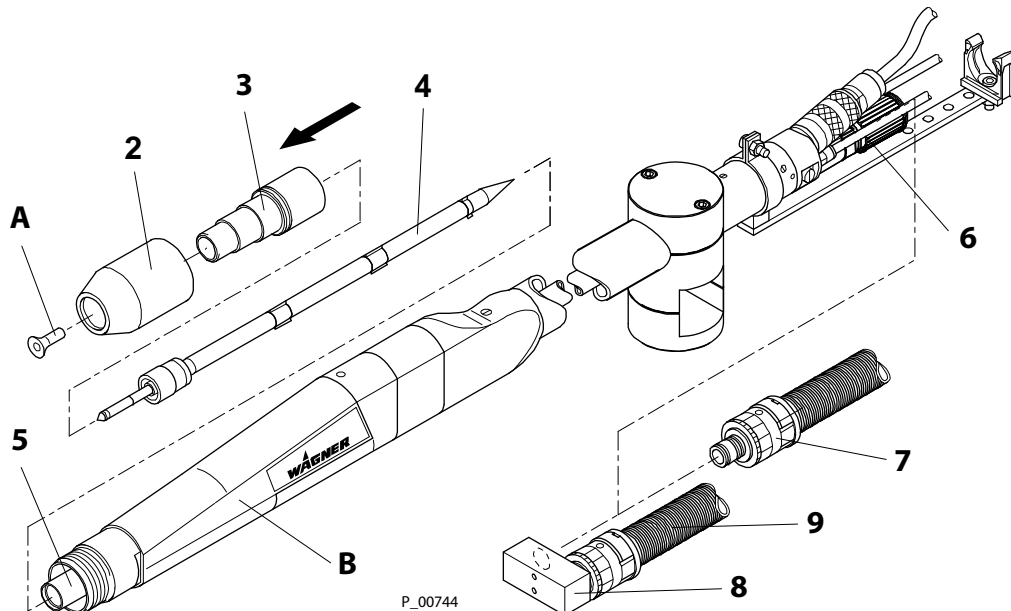
If you want to manually switch off the spray gun and are using a powder injector that is **not designed** for automatic purging, proceed as follows:

- The atomizing air **must** be left open so that **no powder** can enter the atomizing air ducts during purging. Switch off the powder feed.
- If you do not want to change the settings for the feed air and dosage air so that you can continue to coat using the same powder pattern, pull the powder injector out of the injector connection on the powder container. No more powder will be fed when the powder feed is switched back on.
- Switch the powder feed back on so that the spray gun is blown clear of powder.
- Finally, switch the powder feed and the high voltage generator back off and secure against inadvertent switching on.

### 3.3 Performing a color change

During a color change all parts carrying powder in the entire coating system **must** be **thoroughly** cleaned of powder residue. In the following only the procedure for the powder spray gun is described.

- Flush the gun manually and remove all powder residues.
- Switch off the powder feed and secure against inadvertent switching on.



- Disconnect the hose for powder feed **7** from the spray gun **6** and place it on the powder hose take-up **8**.
- Blow the spray gun out with compressed air.
- Pull the deflector cone **A** off the charging body **4**.
- Unscrew the outer nut **2** from the spray gun housing **B**.
- Carefully pull the nozzle body **3** and the charging body **4** out of the powder tube **5**.





#### Caution

When pulling out and inserting the parts, ensure that the charging body is not damaged!

- Remove powder residue from the parts removed and the spray gun.
- Carefully refit the charging body **4** and the nozzle body **3** in the spray gun housing **B** and tighten using the outer nut **2**.
- Slide the deflector cone **A** back over the charging body **4**.
- Take the hose **9** for the new color from hose take-up **8** and connect it to the spray gun **B**.

The spray gun is ready for use again.

## 4. Maintenance and cleaning

 <b>WARNING</b>	 <b>CAUTION</b>
<p>WHEN CLEANING THE ELECTROSTATIC SYSTEM, THESE SAFETY PROCEDURES MUST BE FOLLOWED. FAILURE TO FOLLOW THESE PROCEDURES MAY RESULT IN AN EXPLOSION/FIRE.</p> <ul style="list-style-type: none"> <li>• Turn power pack to the "OFF" position and unplug from power source before starting to clean.</li> <li>• Exhaust and fresh air introduction must be maintained during the clean up operation.</li> <li>• Keep cleaning materials in approved safety containers.</li> <li>• All personnel and cleaning equipment, including container used in cleaning operation, must be grounded.</li> <li>• DO NOT turn on the <b>POWER PACK</b> until the cleaning operation has been completed, all cleaning materials have been removed from spray area, and spray area is free of any mixtures of powder and air produced by the cleaning operation.</li> <li>• If defects in the equipment are found, DO NOT use until repairs are completed.</li> </ul>	<ul style="list-style-type: none"> <li>• Clean equipment immediately after use.</li> <li>• NEVER IMMERSE SPRAY GUN OR PARTS OF IT IN ANY FLUID AT ANY TIME.</li> <li>• Be sure the Power Pack is turned off and unplugged from the power source.</li> </ul> <p style="text-align: center;"><b>NOTE</b></p> <ul style="list-style-type: none"> <li>• The powder passages of the spray gun should be cleaned while cleaning the powder hose and powder pump, following instructions, provided with the powder pump (injector). <b>(See powder injector operating manual)</b></li> <li>• Clean the spray tip by removing from spray gun, flushing with air and replacing on spray gun.</li> </ul>

### 4.1 Replacing the spray gun

0401\_.doc

Before you commence the replacement of the spray gun any powder residue **must** be removed **thoroughly**.

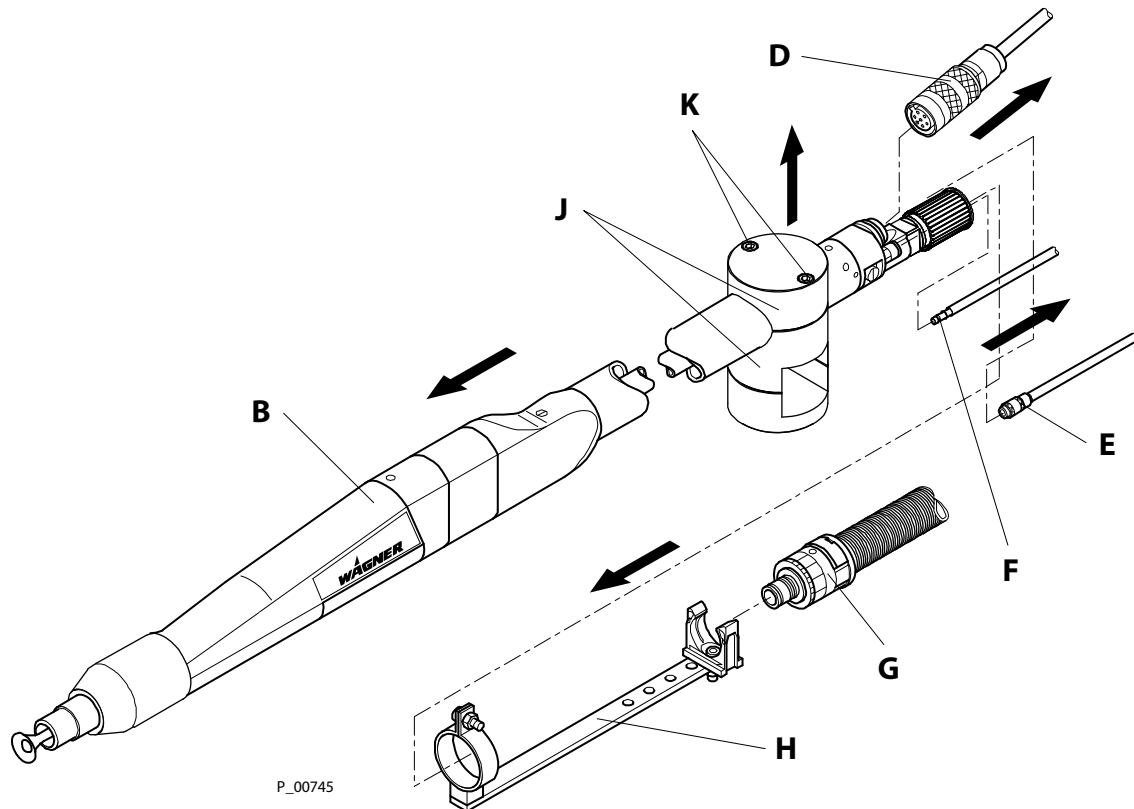


#### Caution

Repair or replacement of the spray gun or parts of the spray gun is only allowed to be performed outside the hazard area and in a suitable place by specialist personnel!

The wearing parts in the spray gun, marked in the spare parts list with \*, must be regularly checked and, if necessary replaced.





- Switch the system off.
- Remove the electrical cable **D** from the spray gun **B**.
- Disconnect the hose for powder feed **G**, atomizing air **F** and Tribo air **E** from the spray gun **B**.
- Unscrew the kinking protection **H** from the gun.
- Undo the socket head cap screws **K** and open the upper part of the cross attaching piece **J**.
- Pull the spray gun out of the cross attaching piece.
- Replace the spray gun with a new gun and fit this is in the reverse order of removal.

## 4.2 Cleaning the spray gun and replacing the wearing parts

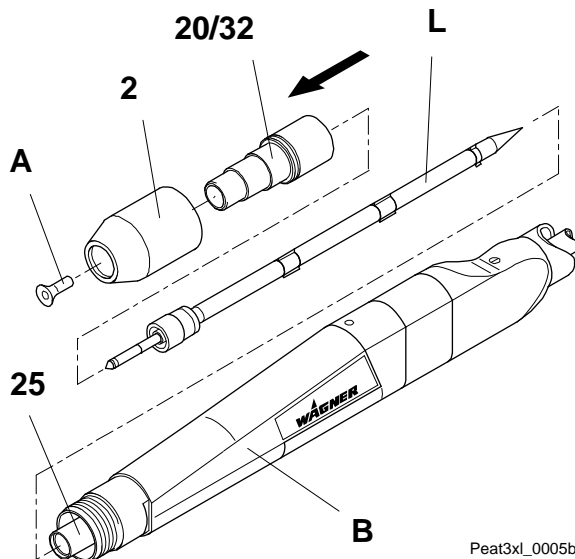


### Caution

Never place the spray gun or parts of the spray gun in cleaning agent!  
When pulling out and inserting the parts, ensure that the charging body is not damaged!

### 4.2.1 Replacing the charging body

0402\_Peat3xl\_Verschleiss.doc

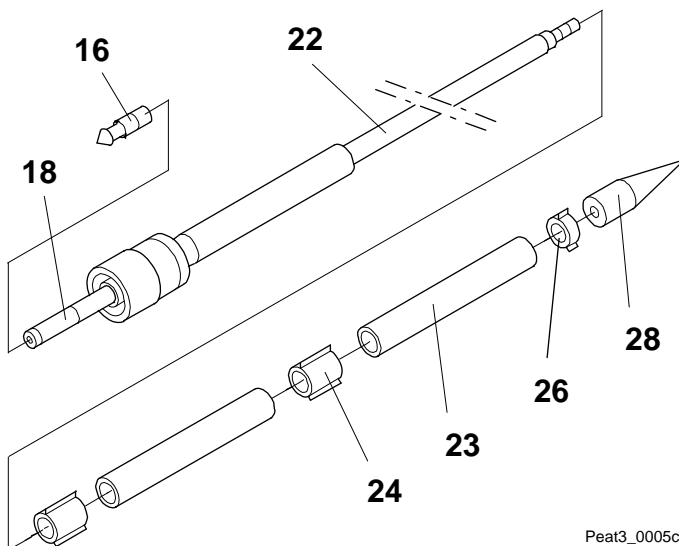


Peat3xl\_0005b

- Pull the deflector cone **A** off the charging body **L**.
- Unscrew the outer nut **2** from the gun housing **B**.
- Pull the nozzle body **20/32** off the powder tube **25**.
- Carefully extract the charging body **L** out of the powder tube **25**.
- Check the removed parts for wear. The **entire** charging body can be replaced with a **new** one during this procedure.

0402\_Peat\_Verschleiss.doc

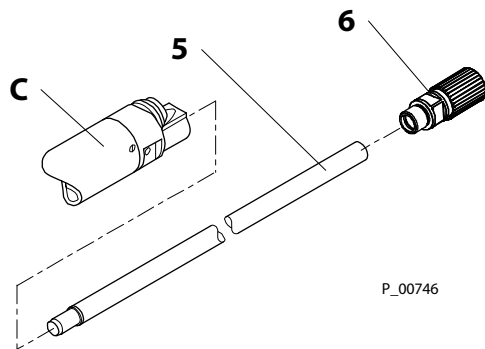
It is also possible to dismantle the charging body and merely replace the parts affected by wear.



Peat3\_0005c

- Unscrew the tip **28** from the threaded bar **22**.
  - Carefully pull the parts **24** to **26** off the threaded rod **22**.
  - As a rule you only need to check the parts **24** to **26** for wear and replace them as necessary.
  - Clean all parts that have **not** been subject to wear.
  - Unscrew the air nozzle **16** from the deflector cone rod **18** if worn and replace it with a **new** one.
  - Reassemble the charging body **L** and carefully push it into powder tube **25**.
- Carefully push the nozzle body **20/32** over the powder tube **25** and tighten on the gun housing **B** using the outer nut **2**.
  - Slide the deflector cone **A** back over the charging body **L**.

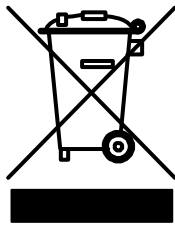
### 4.2.2 Replacing the powder tube



- Unscrew and remove coupling piece **6** from the extension **C**.
- Pull the rear powder tube **5** out of the extension **C**.
- Clean powder tube **5** or if worn, replace it with a new powder tube.
- Push the powder tube **5** back up to the stop into the coupling piece **6**.
- Push the powder tube **5** with the coupling piece **6** in the extension **C** and screw the coupling piece **6** tightly back onto the extension.

### 4.3 Disposal

04\_Entsorgung.doc



Only for EU countries

**Do not dispose of electric tools together with household waste material!**

In observance of the European Directive 2002/96/EG on waste electrical and electronic equipment and implementation in accordance with national law, this product is not to be disposed of together with household waste material but must be recycled in an environmentally friendly way!

Wagner or one of our dealers will take back your used Wagner waste electrical or electronic equipment and will dispose of it for you in an environmentally friendly way. Please ask your local Wagner service center or dealer for details or contact us direct.

## 5. Rectification of malfunctions

05\_Stoerung\_T3.doc

Malfunction	Cause	Rectification
No Tribo current (e.g. no wrap-around or no powder adhesion)	<ul style="list-style-type: none"> <li>- Inadequate or no powder charging</li> <li>- Electrical cable from spray gun to control unit faulty</li> <li>- Tribo current measuring or display module defective</li> <li>- Powder-conveying parts in spray gun worn</li> </ul>	<ul style="list-style-type: none"> <li>- Contact Wagner Service</li> <li>- Replace electrical cable</li> <li>- Contact Wagner Service</li> <li>- Replace worn parts</li> </ul>
Poor wrap around Back spray	<ul style="list-style-type: none"> <li>- Inadequate or no ground</li> </ul>	<ul style="list-style-type: none"> <li>- See chapter "<a href="#">Grounding</a>"</li> </ul>
Powder outlet uneven or inadequate	<ul style="list-style-type: none"> <li>- Soiling</li> <li>- Powder sintering or powder-conveying parts in spray gun worn</li> <li>- Feed device soiled</li> <li>- Feed air / dosage air ratio incorrect</li> <li>- Wear on powder injector nozzle</li> </ul>	<ul style="list-style-type: none"> <li>- Blow through parts carrying powder</li> <li>- Clean parts carrying powder and replace if necessary</li> <li>- See operating instructions for the related devices connected</li> <li>- Adjust at control module or control unit</li> <li>- Replace worn parts in the powder injector 1.)</li> </ul>
Spray pattern is uneven	<ul style="list-style-type: none"> <li>- Parts of nozzle system worn</li> </ul>	<ul style="list-style-type: none"> <li>- Replace worn parts</li> </ul>

1.) You will find the wearing parts and spare parts in the operating instructions for the powder injector.

## 6. Technical data

### Weight:

<b>PEA-T3XL 1.8:</b>	2400 g
<b>PEA-T3XL 1.4:</b>	2100 g
<b>PEA-T3XL 1.1:</b>	1840 g
<b>PEA-T3XL 0.85:</b>	1620 g

06\_Tribopistolendaten.doc

### Electrical:

Design:	as per EN 50177 and EN 50050
Protection class:	IP 54

### Pneumatic:

Input air pressure (Tribo air):	max. 43.5 psi (3 bar)
Powder output quantity:	max. 300 g/min

06\_.doc

### Required compressed air quality:

Quality class	Compressed air quality according to ISO 8573.1	
<b>5</b>	Max. residual water: (pressure dew point in in °F at 100 psi / °C at 700 kPa)	+44.6 °F / +7 °C
<b>2</b>	Max. oil contents:	0.1 mg oil/m <sup>3</sup> / 0.1 oz/ft <sup>3</sup>
<b>3</b>	Max. concentration:	5 mg/m <sup>3</sup> / 5 oz/ft <sup>3</sup>
<b>3</b>	Max. particle size:	5 µm / 5 microns

### Ambient conditions:

If low temperature powders are used, the ambient temperature may have to be lower than 86 °F (30 °C).



### Volume measures:

For volumes, specified in Nm<sup>3</sup> (standard cubic meters). One cubic meter of a gas at 32 °F (0 °C) and 1.013 bar is called norm cubic meter.

1 Nm<sup>3</sup>/h = 35.3 ft<sup>3</sup>/h; 1 bar = 14.504 psi

## 7. Warranty

08\_.doc

### **What is covered by this warranty?**

Faulty or defective parts are replaced according to our general delivery conditions.

Within the applicable warrant period, Wagner will repair or replace, at our option, defective parts without charge if such parts are returned with transportation charges prepaid to the nearest authorized service center. If Wagner is unable to repair this product so as to conform to this Limited Warranty after a reasonable number of attempts, Wagner will provide, at our option, either a replacement for this product or a full refund of the purchase price of this product.

**These remedies are the sole and exclusive remedies available for breach of express and implied warranties.**

### **What is not covered by this warranty?**

This warranty does not cover any of the following damages or defects:

1. Damages or defects caused by use or installation of repair or replacement parts or accessories not manufactured by Wagner,
2. Damages or defects caused by repair performed by anyone other than a Wagner authorized service center, or
3. Damages or defects caused by or related to abrasion, corrosion, abuse, misuse, negligence, accident, normal wear, faulty installation or tampering in a manner which impairs normal operation.

### **Limitation of remedies:**

IN NO CASE SHALL WAGNER BE LIABLE FOR ANY INCIDENTAL, SPECIAL OR CONSEQUENTIAL DAMAGES OR LOSS, INCLUDING TRANSPORTATION COSTS, WHETHER SUCH DAMAGES ARE BASED UPON A BREACH OF EXPRESS OR IMPLIED WARRANTIES, BREACH OF CONTRACT, NEGLIGENCE, STRICT TORT, OR ANY OTHER LEGAL THEORY.

### **Disclaimer of implied warranties:**

THE FOREGOING WARRANTIES ARE IN LIEU OF ALL OTHER WARRANTIES, EXPRESS OR IMPLIED, INCLUDING BUT NOT LIMITED TO THE IMPLIED WARRANTIES OF MERCHANTABILITY AND FITNESS FOR A PARTICULAR PURPOSE.

### **No ability to transfer:**

This warranty is extended to the original purchaser only and is not transferable.

### **Your rights under state law:**

Some states do not allow limitations on how long an implied warranty lasts or the exclusion of incidental or consequential damages, so the above limitation and exclusion may not apply to you. This warranty gives you specific legal rights; you may also be entitled to other rights, which vary from state to state.

## 8. Scope of delivery and spare parts lists

### 8.1 How to order spare parts

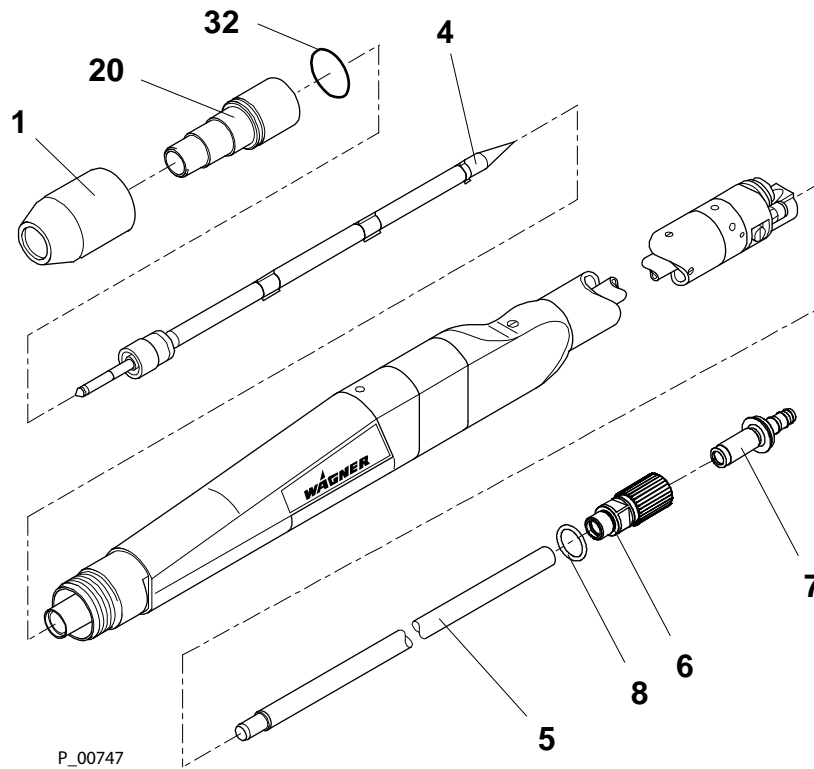
0901\_.doc

Faulty and unserviceable parts are replaced in accordance with our General Terms and Conditions of Delivery.

In order to be able to guarantee safe and smooth spare parts delivery, the following information is necessary:

- **Invoicing address**
- **Delivery address**
- **Name of contact persons for check back**
- **Type of delivery**
- **Quantity ordered, article number and designation**

**8.2 Scope of delivery and spare parts spray gun PEA-T3XL**



Item	Article No.	Designation
--	<b>0351032</b>	<b>Spray gun PEA-T3XL 1.8</b>
--	<b>0351029</b>	<b>Spray gun PEA-T3XL 1.4</b>
--	<b>0351030</b>	<b>Spray gun PEA-T3XL 1.1</b>
--	<b>0351031</b>	<b>Spray gun PEA-T3XL 0.85</b>
1	0351654	Outer nut Tribo ET
4	0260629 *	Charging body (complete)
5	0351978 *	Rear powder tube Tribo 1.8 ET
5	0351929 *	Rear powder tube Tribo 1.4 ET
5	0351930 *	Rear powder tube Tribo 1.1 ET
5	0351931 *	Rear powder tube Tribo 0.85 ET
6	0390954 *	Coupling piece
7	0390955 *	Hose coupling D10/12
7	0390956 *	Hose coupling D8/10 ***
7	0390965	Hose coupling D10/12 *** (for application at axis of rotation, see chapter "Accessories")
8	9974184 *	O-ring 22x3
20	0351569 *	Nozzle body
32	9974047 *	O-ring 32x2

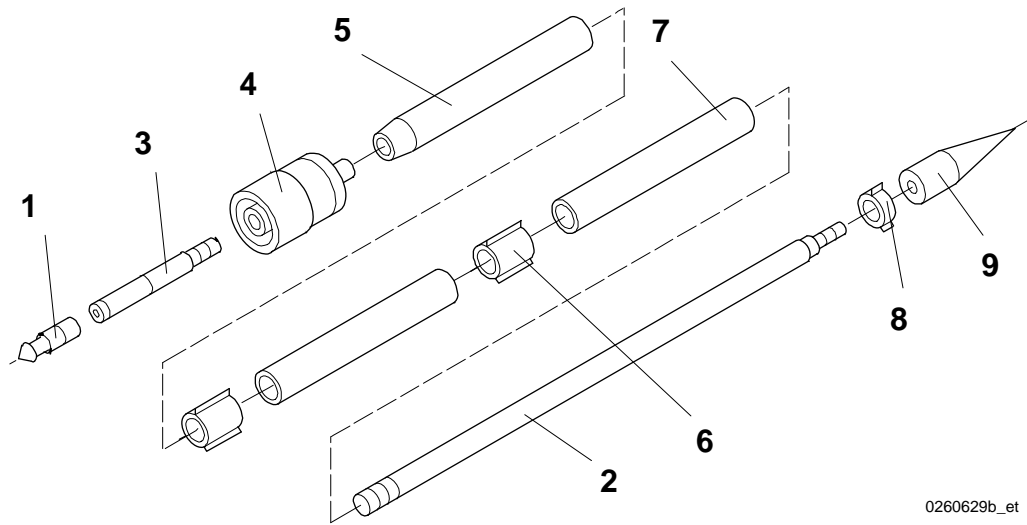
\* Wearing part

\*\*\* available as accessory



### 8.3 Spare parts charging body

0260629b



0260629b\_et

Item	Article No.	Quantity
--	<b>0260629 *</b>	<b>Charging body (complete)</b>
1	0260632 *	Air nozzle (complete)
2	0260473	Threaded bar
3	0260469 *	Deflector cone rod
4	0260463 *	Central air supply
5	0260470 *	Rod
6	0260476 *	Support ring
7	0260471 *	Charging tube
8	0260474 *	Ring
9	0260472 *	Tip

\* Wearing part

**9. Accessories**

**9.1 Electric cables and hoses**

10\_00008

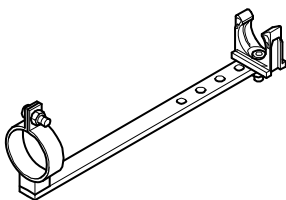
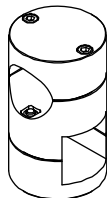
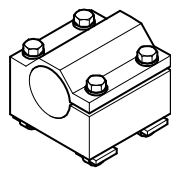
Article No.	Designation	Application
0351297	Electrical cable PEA-T2 5 m	For connecting the spray gun to the Tribo current measuring or display module
0351296	Electrical cable PEA-T2 10 m	
0351295	Electrical cable PEA-T2 20 m	
9987081	Special hose (inside Ø 11 mm)	For the powder feed
9987082	Special hose (inside Ø 12 mm)	
9982079	Hose 6x1, black	Connection of the atomizing air
9982061	Hose 6x1, blue	Connection of the Tribo air

**9.2 Spray gun mounting and fastening**

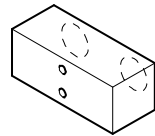


Article No.	Designation
0351933	Quick coupling set Tribo:  For a quick change of the hoses for atomizing and Tribo air

10\_00005



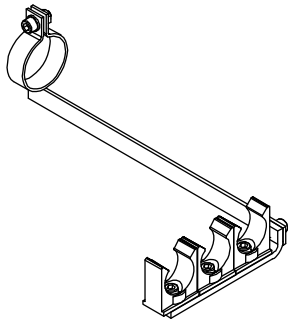
Article No.	Designation
0365215	Clamping element D40 (complete):  For holding the spray gun and for fixing to the oscillator
0373235	Cross attaching piece KVR 40:  For holding the spray gun and for fixing to the reciprocator
0351923	Kinking protection holder XL:  For holding the kinking protection



0351558

Powder hose take-up:

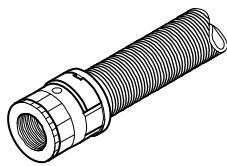
For holding a maximum of two additional powder hoses on making a quick change



0373219

Kinking protection holder:

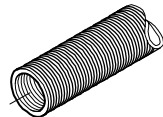
For holding two kinking protections, an electrical cable and a fluid air supply



0351922

Kinking protection:

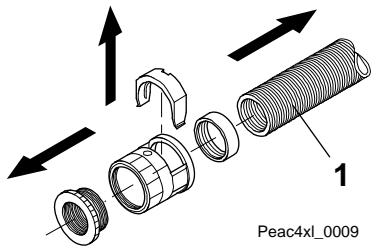
For supporting the powder hose



9998832

Protection hose:

For rearranging the kinking protection (available by the meter)



Peac4xl\_0009

If you want to rearrange the kinking protection, you can fit a protection hose **1** with another length. In order to do this, you only need to take the kinking protection apart and fit another protection hose with another length.

**9.3 Nozzle systems**

**9.3.1 Fan nozzle and deflector cone**

10\_00009

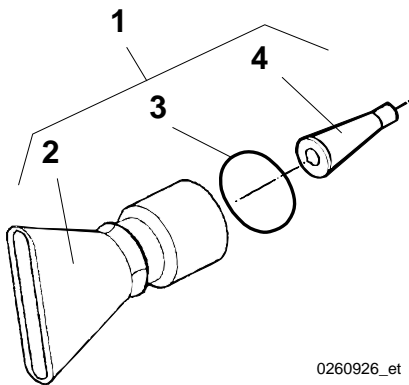


Article No.	Designation
0260928 *	Fan nozzle
0260267 *	Deflector cone Tribo Ø18
0260266 *	Deflector cone Tribo Ø25
0260268 *	Deflector cone Tribo Ø32

\* Wearing part

**9.3.2 Wide fan spray nozzle**

0260926



0260926\_et

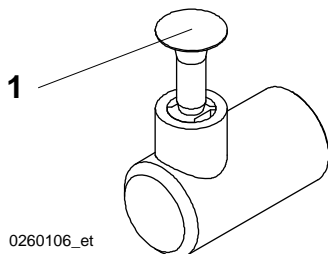
Item	Article No.	Designation
1	0260926 *	Wide fan spray nozzle **
2	0260280 *	Wide fan spray nozzle
3	9971037 *	O-ring 22x1.5
4	0260627 *	Deflector cone Ø13

\* Wearing part

\*\* only available as a set

**9.3.3 Angle nozzle 90°**

0260106



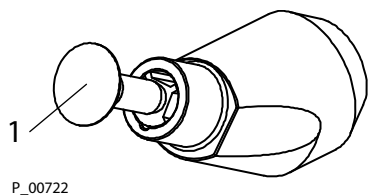
0260106\_et

Item	Article No.	Designation
--	0260106 *	Angle nozzle 90° **
1	0259474 *	Deflector cone (Ø22)

\* Wearing part

\*\* only available as a set

9.3.4 Angle adapter WA 30 T3



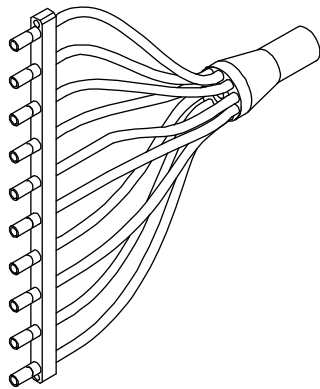
Item	Article No.	Designation
--	0260933 **	Angle adapter Tribo WA 30 T3
1	0259474 *	Deflector cone (Ø22)

\* Wearing part

\*\* only available as a set

9.3.5 Finger nozzles

10\_00010



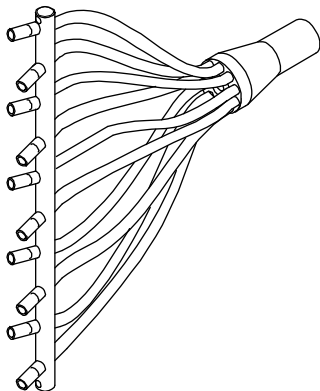
Article No.

Designation

0260638

Finger nozzle x 10:

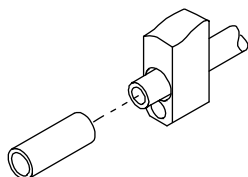
For uniform coat thickness when coating flat surfaces



0260641

Crossed finger nozzles x 10:

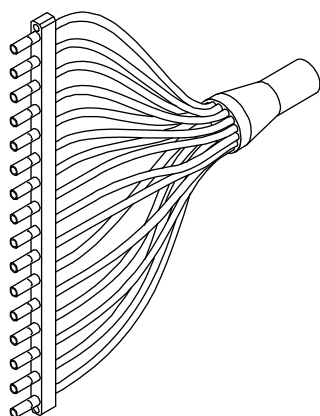
For uniform coat thickness when coating complicated profiles



0260518 \*

Nozzle Ø10:

Standard nozzle in the 10 x finger nozzle and 10 x crossed finger nozzle

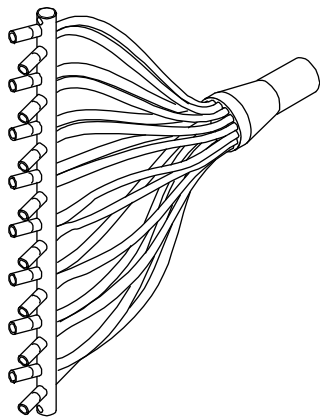


0260637

Finger nozzles x 16:

For uniform coat thickness when coating flat surfaces and a reduced stripe formation (relative to the 10 x finger nozzle)

\* Wearing part



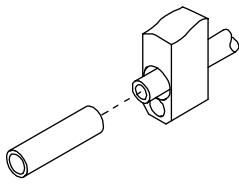
Article No.

Designation

0260642

Crossed finger nozzles x 16:

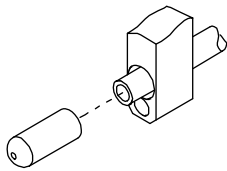
For uniform coat thickness when coating complicated profiles and a reduced stripe formation (relative to the 10 x finger nozzle)



0260519 \*

Nozzle Ø8:

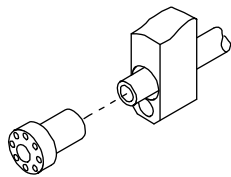
Standard nozzle in the 16 x finger nozzle and 16 x crossed finger nozzle



0260505 \*

Round nozzle Ø2.3:

The round nozzle generates a concentrated spray and is suitable for spraying in corners, holes, recesses, etc.



0260504 \*

Powder shower:

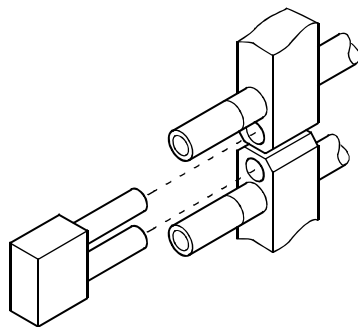
The powder shower generates an extremely fine spray and is suitable for flat surfaces.

\* Wearing part

Connect the finger nozzles to the associated adapters to stabilize them if you have equipped several spray guns with a finger nozzle and mounted the guns above each other on the reciprocator.

These adapters are described below:

10\_00011



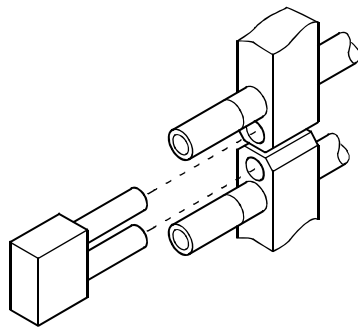
**Article No.**

**Designation**

0260639

Adapter:

For connecting and stabilizing several  
**10 x** finger nozzles



0260648

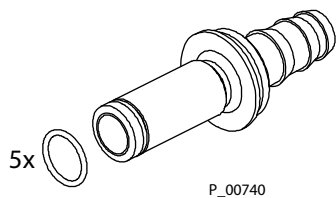
Adapter:

For connecting and stabilizing several  
**16 x** finger nozzles



## 9.4 Hose take-up for axis of rotation

A special hose take-up is available, when using the gun at rotation axis.



Hose take-up 0390965

O-ring 9971197 (5 pieces)



### Hint

We recommend replacing the O-ring after 150 operating hours with a new one!



**Germany**

J. WAGNER GmbH  
Otto-Lilienthal-Str. 18  
D-88677 Markdorf

Phone +49/7544/505-0  
Fax +49/7544/505-200  
service.standard@wagner-group.com

**Switzerland**

J. WAGNER AG  
Postfach 109  
Industriestrasse 22  
CH-9450 Altstätten

Phone +41/71/7572211  
Fax +41/71/7572222  
rep-ch@wagner-group.ch

**Austria**

J. WAGNER GmbH  
Otto-Lilienthal-Str. 18  
Postfach 1120  
D- 88677 Markdorf

Phone: +49/7544/505-0  
Fax: +49/7544/505-200  
service.standard@wagner-group.com

**Netherlands**

Wagner Systemen Nederland B.V.  
Proostwetering 105 C  
NL-3543 AC UTRECHT

Phone ++31/30/2410688  
Fax +31/30/2410765  
info@wagnersystemen.nl

**Belgium**

Estee Industries

Leenbeekstraat 9  
B-9770 Kruishoutem

Phone +32/9/3885410  
Fax +32/9/3885440  
info@estee-industries.com

**Denmark**

WAGNER Industrial Solution Scandinavia AB  
(WISS)  
Kabingatan 28  
S-25467 Helsingborg

Phone +46/42/150020  
Fax +46/42/150035  
info@wagner-industri.com

**Sweden**

WAGNER Industrial Solutions Scandinavia AB  
Skolgatan 61  
Sverige - 56831 Skillingaryd

Phone +46(0)370/79830  
Fax +46(0)370/79848  
info@wagner-industri.com

**Great Britain**

WAGNER Spraytech (UK) Ltd.  
The Coach House  
2, Main Road  
Middleton Cheney OX17 2ND

Phone +44/1295/714200  
Fax +44/1295/710100  
enquiry@wagnerspraytech.co.uk

**USA**

WAGNER Systems Inc.  
300 Airport Road, Unit 1  
Elgin, IL 60123

Phone +1(0)630/503-2400  
Fax +1(0)630/503-2377  
info@wagnersystemsinc.com

**Japan**

WAGNER- HOSOKAWA Micron Ltd.  
No. 9, 1-Chome  
Shodal Tajka, Hirakata-Shi  
Osaka 673-1132

Phone +81/728/566751  
Fax +81/728/573722  
sempara@kornet.net

---

**China**

WAGNER SPRAYTECH SHANGHAI CO LDT.  
4<sup>th</sup> Flr, No. 395  
Jiangchangxi Road, Shibe Industrial Zone  
Shanghai, 200436

Phone +86/2166521858  
Fax +86/2166529819  
wagnersh@public8.sta.net.cn

---

**France**

J. Wagner France SARL  
Parc Gutenberg, 8 Voie la Cardon – Bat F  
F-91128 Palaiseau-Cédex

Phone +33/825/011111  
Fax +33/1/69817257  
Division.solutionsindustrielles@wagner-france.fr

---

**Italy**

WAGNER Itep S.p.A.  
Via Santa Vecchia, 109  
I-22049 Valmadrera - LC

Phone +39/0341/212211  
Fax +39/0341/210200  
wagnerit@tin.it

**Spain**

WAGNER Spraytech Iberia S.A.  
P.O. Boc, 132, Crtra. N-340, KM 1245,4  
E-08750 Molins de Rei (Barcelona)

Phone +34/93/6800028  
Fax +34/93/6800555  
info@wagnerspain.com